

Customer :

customer

Customer part :

customer part

Comment :

Comment

S1=0.02

S2=0.07

Tmax=390

Tp S2=429.0

PI=0.24

HI=4

Sample =12311.7

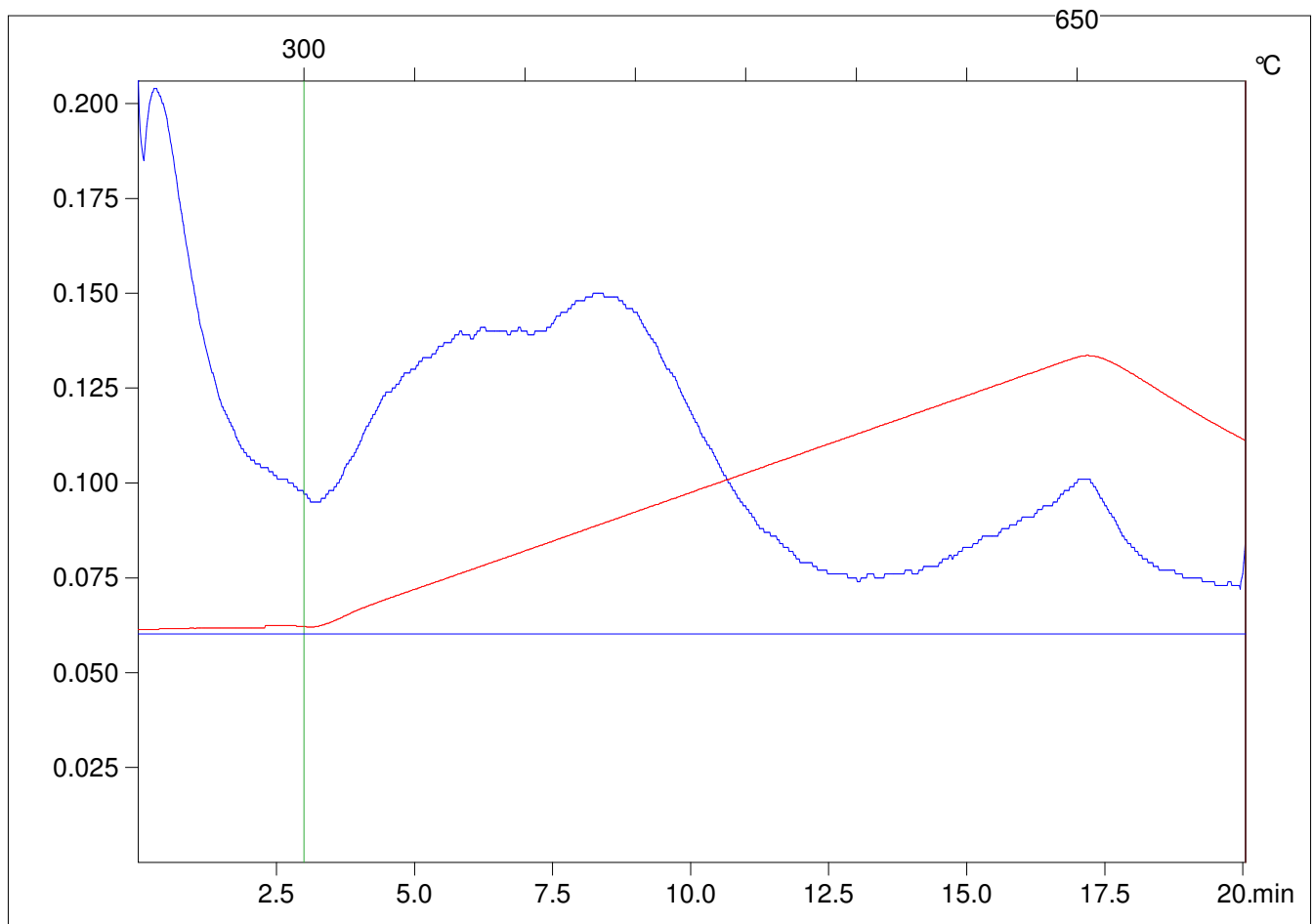
Method =Bulk Rock

Cycle=Basic

KFID(10*9)=1167

Qty =70.5

TOC=1.59



C:\VINC\PK141015\PK040.R00 : FID pyrolysis graphic

State

Pyro Status

Oxi Status